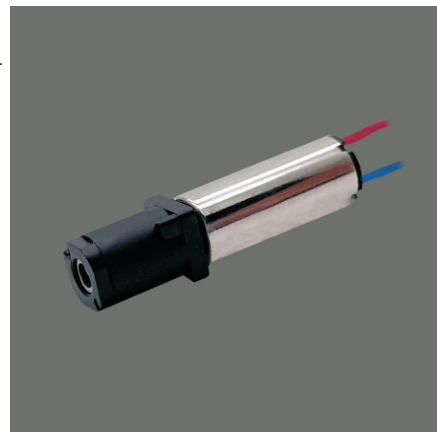
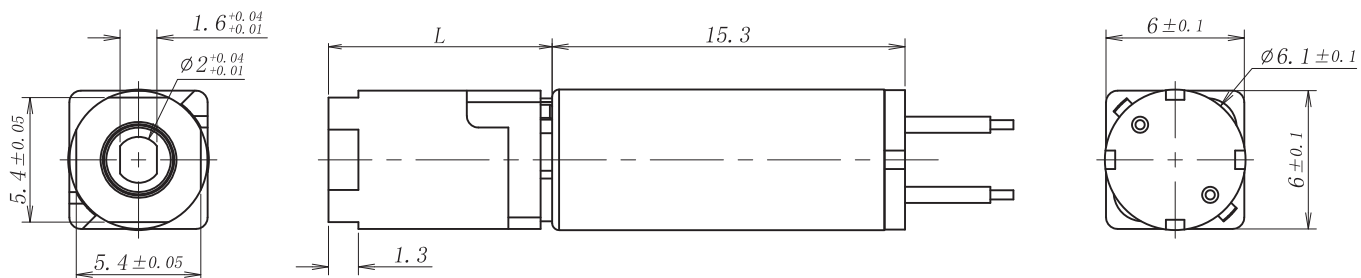


GMP06-TDC06 6mm gearbox plus 6mm Coreless permanent magnet DC motor



模数 Module	0.11			
额定负载 Rated torque (kg.cm)	0.3 (塑胶外壳)		1 (金属外壳)	
瞬间允许力矩 Max momentary tolerance torque (kg.cm)	1 (塑胶外壳)		3 (金属外壳)	
减速比 Reduction ratio	1/5	1/25	1/125	1/625
齿轮箱减速级数 Number of gear stages	1	2	3	4
减速箱长度 Gearbox length L (mm)	7.55	9.7	11.85	14



Weight: 2.35g(Approx)

Unit(mm)

减速电机技术参数 Gear Motor Technical Data

减速比 Reduction ratio		5	25	125	625				
3.7V	空载转速 No-load speed (rpm)	10714	2143	429	86				
	负载转速 Rated speed (rpm)	9575	1915	383	77				
	负载力矩 Rated torque (kg.cm)	0.01	0.04	0.16	0.68				

单电机技术参数 Motor Technical Data

电机型号 Motor model	额定电压 Rated voltage	无负荷 No-load		额定 Rated				堵转 Stall	
		转速 Speed	电流 Current	转速 Speed	力矩 Torque	电流 Current	功率 Power	力矩 Torque	电流 Current
	VDC	r/min	mA	r/min	g.cm	mA	W	g.cm	A
TDC06	3.7V	54641	60	47876	2.08	396	1.02	16.8	2.805

